






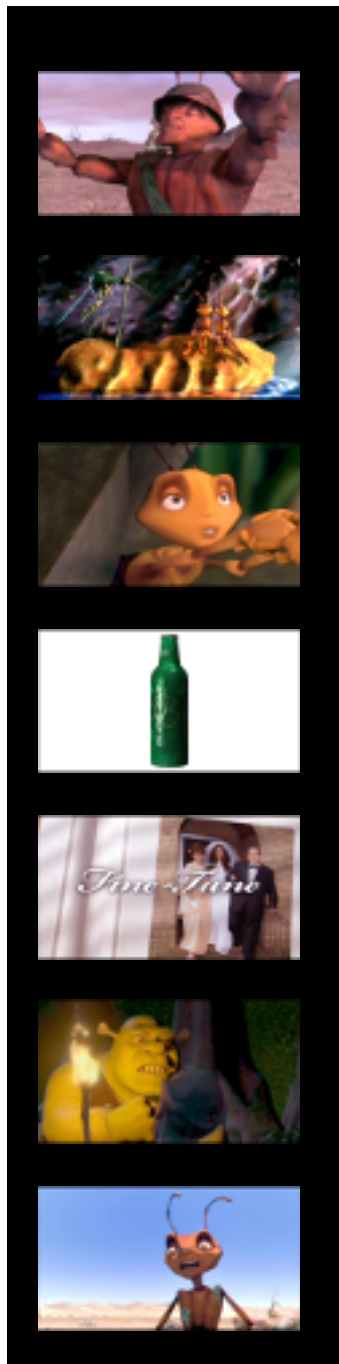


	2D	3D	Animation	Modeling	Textures	Lighting	Composite	Effects	Scripting	Notes
<b>Lazor Reel 081911</b> <b>Notes</b>	✓	✓	✓	✓	✓	✓	✓	✓	✓	This spreadsheet describes the work I've done in each scene.
		✓	✓		✓	✓	✓	✓		Linear pipeline test
		✓	✓	✓	✓	✓		✓		2D & 3D morphing
	✓		✓				✓			Motion graphics on clients stock footage
		✓	✓	✓	✓	✓	✓	✓	✓	Entire Project - Design though delivery
		✓	✓		✓	✓				It's just a van.
	✓	✓	✓	✓	✓	✓	✓	✓		Entire Project - Design though delivery
	✓		✓	✓	✓	✓	✓		✓	Entire Project - Design though delivery



2D	3D	Animation	Modeling	Textures	Lighting	Composite	Effects	Scripting	Notes
	✓				✓	✓			Lighting crew for ANTZ
	✓			✓	✓	✓	✓		Lighting, Effects and Composite work
	✓				✓	✓			Lighting crew for ANTZ
	✓	✓	✓	✓	✓	✓	✓	✓	Entire Project - Design though delivery
✓		✓				✓	✓	✓	Solved technical problems in footage. Recreated photos to match original footage.
	✓						✓	✓	Wrote the original script for the small torch effect. Delivered to Shrek effects crew.
	✓	✓				✓	✓	✓	Implemented mung effect as well as mung animation. (Mung is the glop on the characters.)